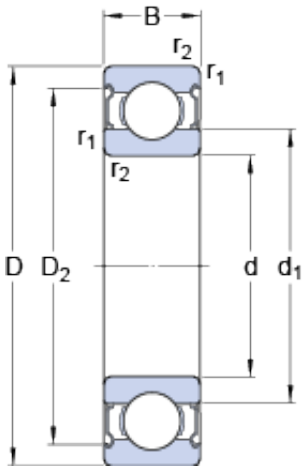




TIMKEN BEARING-SINGAPORE (PTE)LTD.



6310-2Z Bearing 2D drawings and 3D CAD models

SKF/NSK/FAG/ZWZ/VNV/NTN Bearing 6310-2Z Deep Groove Ball Bearing

Bearing No. 6310-2Z

Size	110x50x27 mm
Bore Diameter	110 mm
Outer Diameter	50 mm
Width	27 mm
d	50 mm
D	110 mm
B	27 mm
d ₁	68.76 mm
D ₂	95.2 mm
r _{1,2}	
d _a - min.	61 mm
d _a - max.	68.7 mm
D _a - max.	99 mm
r _a - max.	2 mm
Basic dynamic load rating - C	65 kN
Basic static load rating - C ₀	38 kN
Fatigue load limit - P _u	1.6 kN
Reference speed	13000 r/min
Limiting speed	6700 r/min
Calculation factor - k _r	0.03
Calculation factor - f ₀	13
Category	Single Row Ball Bearings
Inventory	0.0
Manufacturer Name	SKF



TIMKEN BEARING-SINGAPORE (PTE)LTD.

Minimum Buy Quantity	N/A
Weight / Kilogram	1.13
EAN	7316571171227
Product Group	B00308
Enclosure	2 Metal Shields
Precision Class	ABEC 1 ISO P0
Maximum Capacity / Filling Slot	No
Rolling Element	Ball Bearing
Snap Ring	No
Internal Special Features	No
Cage Material	Steel
Internal Clearance	C0-Medium
Inch - Metric	Metric
Long Description	50MM Bore; 110MM Outside Diameter; 27MM Outer Race Diameter; 2 Metal Shields; Ball Bearing; ABEC 1 ISO P0; No Filling Slot; No Snap Ring; No Internal Special Features
Category	Single Row Ball Bearing
UNSPSC	31171504
Harmonized Tariff Code	8482.10.50.68
Noun	Bearing
Keyword String	Ball
Manufacturer URL	http://www.skf.com
Manufacturer Item Number	6310-2Z
Weight / LBS	2.48
Bore	1.969 Inch 50 Millimeter
Outer Race Width	1.063 Inch 27 Millimeter
Outside Diameter	4.331 Inch 110 Millimeter
d ₁	68.76 mm
D ₂	95.2 mm



TIMKEN BEARING-SINGAPORE (PTE)LTD.

$r_{1,2}$ min.	2 mm
d_a min.	61 mm
d_a max.	68.7 mm
D_a max.	99 mm
r_a max.	2 mm
Basic dynamic load rating C	65 kN
Basic static load rating C_0	38 kN
Fatigue load limit P_u	1.6 kN
Calculation factor k_r	0.03
Calculation factor f_0	13
Mass bearing	1.12 kg