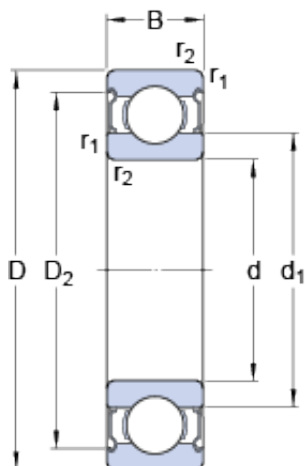




# TIMKEN BEARING-SINGAPORE (PTE)LTD.



624-2z Bearing 2D drawings and 3D CAD models

SKF 624-2z 624-Z 624 634 634-Z 634-2z  
 634-RS1 634-2RS1 634-Rz 634-2rz 618/5 628/5-2z  
 638/5-2z 619/5-2z 619/5 Deep Groove Ball Bearing

Bearing No. 624-2z

Size	13x4x5 mm
Bore Diameter	13 mm
Outer Diameter	4 mm
Width	5 mm
d	4 mm
D	13 mm
B	5 mm
d <sub>1</sub>	6.7 mm
D <sub>2</sub>	11.2 mm
r <sub>1,2</sub> - min.	0.2 mm
d <sub>a</sub> - min.	5.8 mm
d <sub>a</sub> - max.	6.6 mm
D <sub>a</sub> - max.	11.2 mm
r <sub>a</sub> - max.	0.2 mm
Basic dynamic load rating - C	0.936 kN
Basic static load rating - C <sub>0</sub>	0.29 kN
Fatigue load limit - P <sub>u</sub>	0.012 kN
Reference speed	110000 r/min
Limiting speed	53000 r/min
Calculation factor - k <sub>r</sub>	0.025
Calculation factor - f <sub>0</sub>	7.3
Size	13x4x5 mm
Bore Diameter	13 mm



## TIMKEN BEARING-SINGAPORE (PTE)LTD.

Outer Diameter	4 mm
Width	5 mm
d	4 mm
D	13 mm
B	5 mm
d <sub>1</sub>	6.7 mm
D <sub>2</sub>	11.2 mm
r <sub>1,2</sub> - min.	0.2 mm
d <sub>a</sub> - min.	5.8 mm
d <sub>a</sub> - max.	6.6 mm
D <sub>a</sub> - max.	11.2 mm
r <sub>a</sub> - max.	0.2 mm
Basic dynamic load rating - C	0.936 kN
Basic static load rating - C <sub>0</sub>	0.29 kN
Fatigue load limit - P <sub>u</sub>	0.012 kN
Reference speed	110000 r/min
Limiting speed	53000 r/min
Calculation factor - k <sub>r</sub>	0.025
Calculation factor - f <sub>0</sub>	7.3
Category	Single Row Ball Bearings
Inventory	0.0
Manufacturer Name	SKF
Minimum Buy Quantity	N/A
Weight / Kilogram	0.01
EAN	7316577075031
Product Group	B00308
Enclosure	2 Metal Shields
Precision Class	ABEC 1   ISO P0
Maximum Capacity / Filling Slot	No
Rolling Element	Ball Bearing



## TIMKEN BEARING-SINGAPORE (PTE)LTD.

Snap Ring	No
Internal Special Features	No
Cage Material	Steel
Internal Clearance	C0-Medium
Inch - Metric	Metric
Long Description	4MM Bore; 13MM Outside Diameter; 5MM Outer Race Width; 2 Metal Shields; Ball Bearing; ABEC 1   ISO P0; No Filling Slot; No Snap Ring; No Internal Special Features; C0-Medium Internal Clearance; Steel
Other Features	Deep Groove
Category	Single Row Ball Bearing
UNSPSC	31171504
Harmonized Tariff Code	8482.10.50.68
Noun	Bearing
Keyword String	Ball
Manufacturer URL	<a href="http://www.skf.com">http://www.skf.com</a>
Manufacturer Item Number	624-2Z
Weight / LBS	0.012
Bore	0.157 Inch   4 Millimeter
Inner Race Width	0 Inch   0 Millimeter
Outside Diameter	0.512 Inch   13 Millimeter
Outer Race Width	0.197 Inch   5 Millimeter
bore diameter:	4 mm
row type & fill slot:	Single Row Non-Fill Slot
outside diameter:	13 mm
dynamic load capacity:	219 lbf
overall width:	5 mm
static load capacity:	68.6 lbf
bore type:	Round
cage material:	Steel



## TIMKEN BEARING-SINGAPORE (PTE)LTD.

closure type:	Double Shielded
maximum rpm:	56000 RPM
$d_1$	6.7 mm
$D_2$	11.2 mm
$r_{1,2}$ min.	0.2 mm
$d_a$ min.	5.8 mm
$d_a$ max.	6.6 mm
$D_a$ max.	11.2 mm
$r_a$ max.	0.2 mm
Basic dynamic load rating C	0.936 kN
Basic static load rating $C_0$	0.29 kN
Fatigue load limit $P_u$	0.012 kN
Calculation factor $k_f$	0.025
Calculation factor $f_0$	7.3
Mass bearing	0.0031 kg