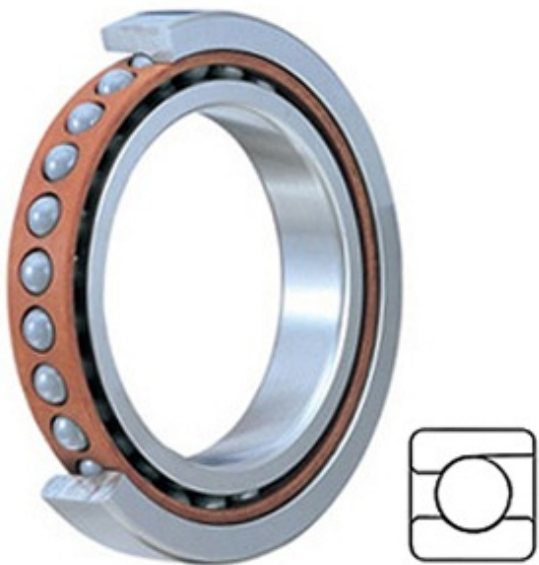




TIMKEN BEARING-SINGAPORE (PTE)LTD.



2.756 Inch | 70 Millimeter x 4.331 Inch | 110 Millimeter x 0.787 Inch | 20 Millimeter TIMKEN 2MM9114WI Precision Ball Bearings

Bearing No. 2MM9114WI

2MM9114WI Bearing 2D drawings and 3D CAD models

Category	Precision Ball Bearings
Inventory	2.0
Manufacturer Name	TIMKEN
Minimum Buy Quantity	N/A
Weight	0.631
EAN	0087796076952
Product Group	B04270
Enclosure	Open
Precision Class	ABEC 7 ISO P4
Material - Ball	Steel
Number of Bearings	1 (Single)
Contact Angle	15 Degree
Preload	None
Raceway Style	1 Rib Outer Ring
Cage Material	Phenolic
Rolling Element	Ball Bearing
Flush Ground	No
Inch - Metric	Metric
Other Features	Single Row Angular Contact Super High Precision
Long Description	70MM Bore; 110MM Outside Diameter; 20MM Width; Open Enclosure; ABEC 7 ISO P4 Precision; Steel Ball Material; 1 (Single) Bearings; 15 Degree



TIMKEN BEARING-SINGAPORE (PTE)LTD.

	Contact Angle; Phenolic Cage Material; 1 Rib Outer Ring Ra
Category	Precision Ball Bearings
UNSPSC	31171531
Harmonized Tariff Code	8482.10.50.28
Noun	Bearing
Keyword String	Angular Contact Ball
Manufacturer URL	http://www.timken.com
Manufacturer Item Number	2MM9114WI
Weight / LBS	1.39
D	4.331 Inch 110 Millimeter
B	0.787 Inch 20 Millimeter
d	2.756 Inch 70 Millimeter
d - Bore	70 mm
D - Outer Diameter	110 mm
Bearing Width	20 mm
do - Ball Diameter	11.906250 mm
C0 - Static Radial Rating	40700 N
Ce - Dynamic Radial Rating ¹	50300 N
Limiting Speed (Grease)	11700 rpm
Limiting Speed (Oil)	23400 rpm
Ball Type	STEEL
Cage Type	CR - Phenolic Outer Land Riding Cage
Bearing Weight	0.604 Kg
Design Units	METRIC
Full Timken Part Number	2MM9114WICR
R - Inner Ring To Clear Radius ²	1.0 mm
r - Outer Ring To Clear Radius ³	1.0 mm
da - Inner Ring Backing	77.700 mm



TIMKEN BEARING-SINGAPORE (PTE)LTD.

Diameter	
Da - Outer Ring Backing Diameter	102.400 mm