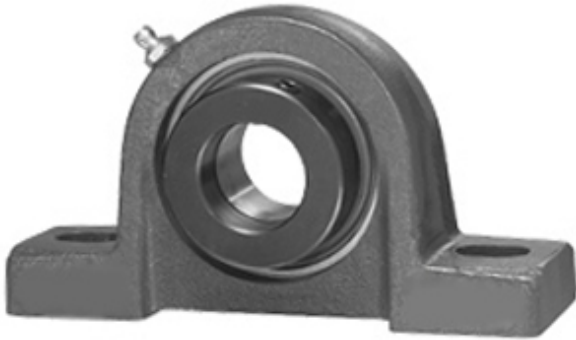




# TIMKEN BEARING-SINGAPORE (PTE)LTD.

1.313 Inch | 33.35 Millimeter x 1.532 Inch |  
 38.913 Millimeter x 1.813 Inch | 46.05 Millimeter  
 IPTCI SAPL 207 21 G Pillow Block Bearings



Bearing No. SAPL 207 21 G

SAPL 207 21 G Bearing 2D drawings and 3D CAD models

Category	Pillow Block Bearings
Inventory	0.0
Manufacturer Name	IPTCI BEARINGS
Minimum Buy Quantity	N/A
Weight	1.82
Product Group	M06110
Number of Mounting Holes	2
Mounting Method	Eccentric Collar
Housing Style	2 Bolt Pillow Block
Rolling Element	Ball Bearing
Housing Material	Cast Iron
Expansion / Non-expansion	Non-expansion
Mounting Bolts	1/2 Inch
Relubricatable	Yes
Insert Part Number	SA207-21G
Seals	K Seal
Housing Configuration	1 Piece Solid
Inch - Metric	Inch
Other Features	Single Row   Narrow Inner Race   Low Base
Long Description	2 Bolt Pillow Block; 1-5/16" Bore; 1-13/16" Base to Center Height; Eccentric Collar Mount; Ball Bearing; Relubricatable; Cast Iron; K Seal; Non-expansion



## TIMKEN BEARING-SINGAPORE (PTE)LTD.

Category	Pillow Block
UNSPSC	31171511
Harmonized Tariff Code	8483.20.40.40
Noun	Bearing
Keyword String	Pillow Block
Manufacturer URL	<a href="http://www.iptci.com">http://www.iptci.com</a>
Manufacturer Item Number	SAPL 207 21 G
Weight / LBS	4
Bolt Spacing Minimum	0 Inch   0Millimeter
Actual Bolt Center to Center	5 Inch   127Millimeter
Bolt Spacing Maximum	0 Inch   0Millimeter
B	1.813 Inch   46.05 Millimeter
d	1.313 Inch   33.35 Millimeter
D	1.532 Inch   38.913 Millimeter
Nominal Bolt Center to Center	5 Inch   127 Millimeter